

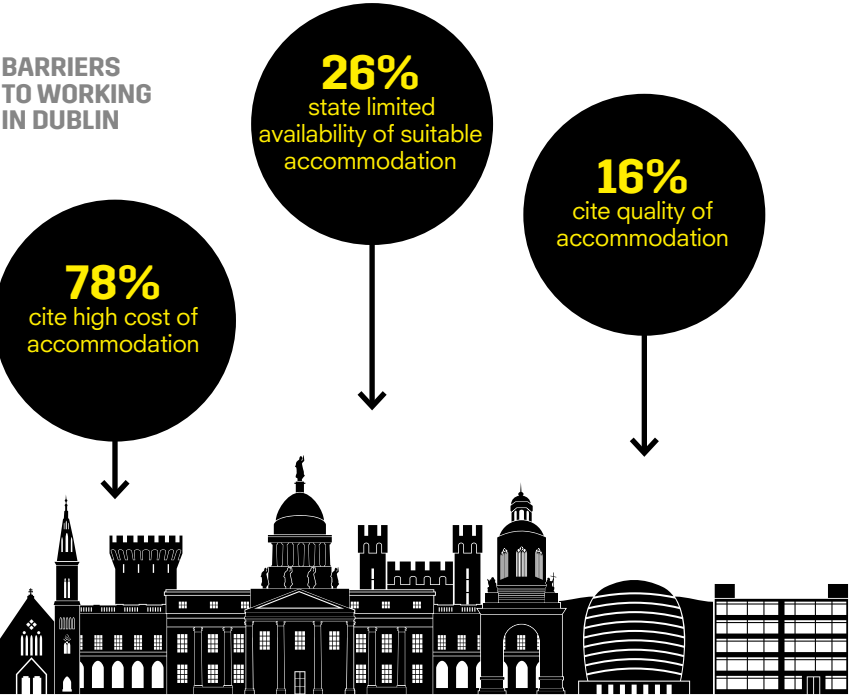
LIVING + WORKING IN DUBLIN

Research examines the triggers and barriers that impact employers' ability to recruit and retain talent in Dublin

TRIGGERS TO WORKING IN DUBLIN



BARRIERS TO WORKING IN DUBLIN



Research commissioned by **U+i**

Research conducted by Behaviour & Attitudes **B&A**